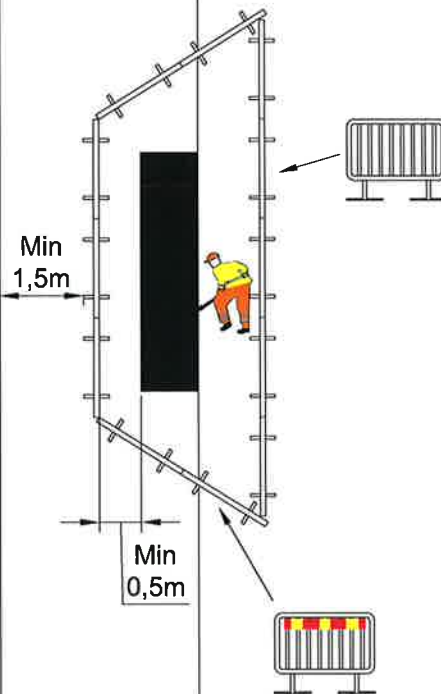


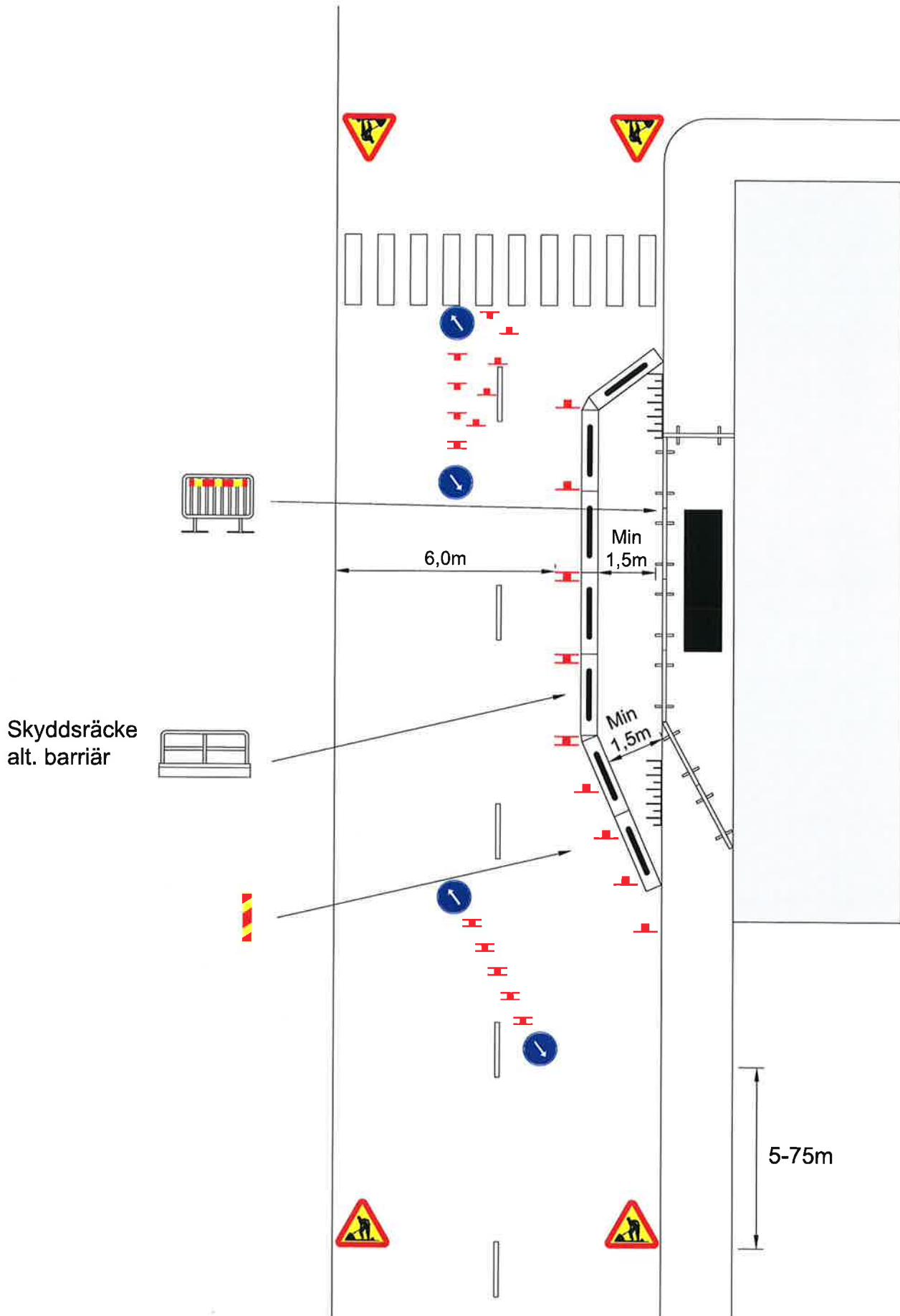
1. Arbete på gång- och cykelväg



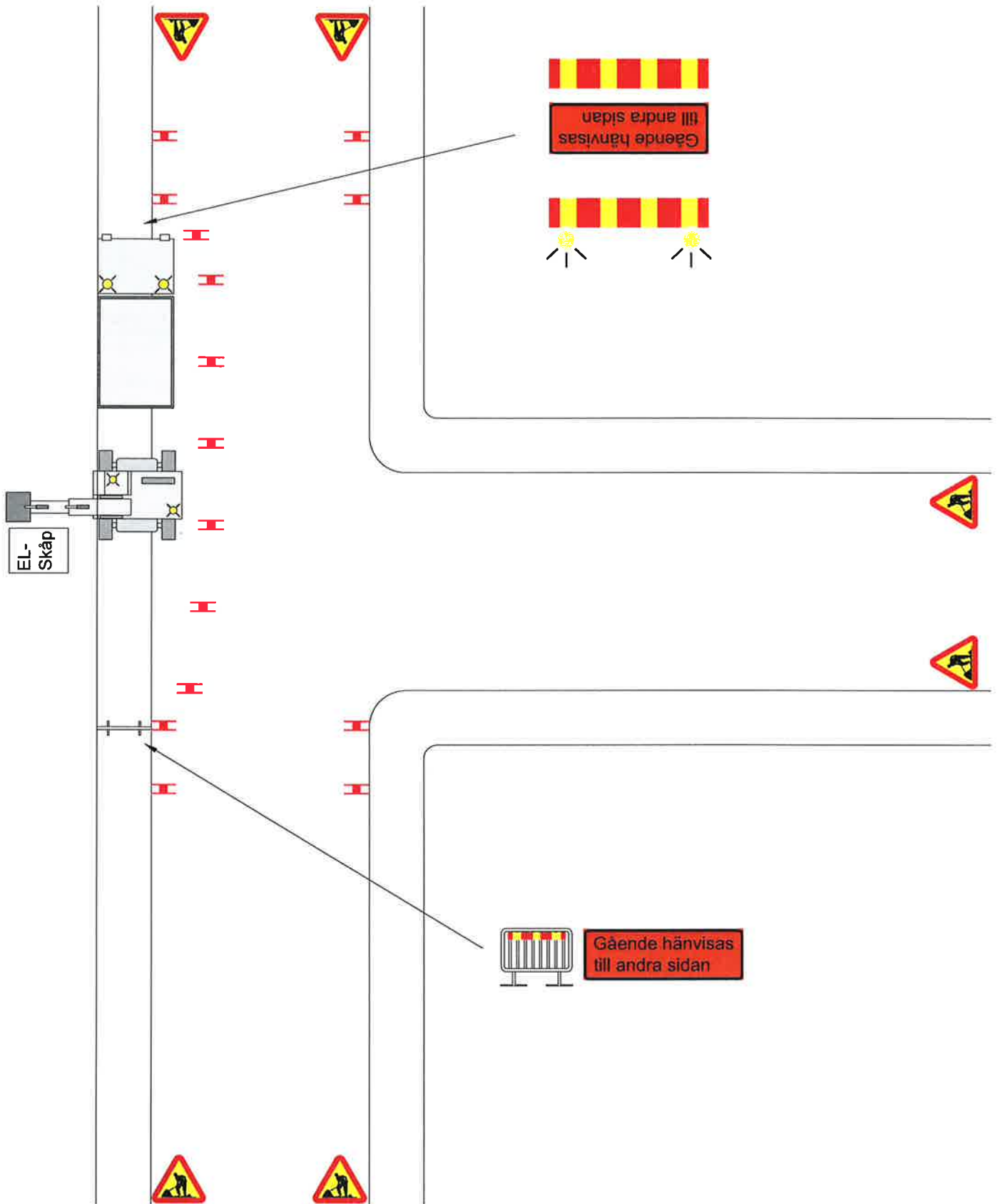
GC-Väg



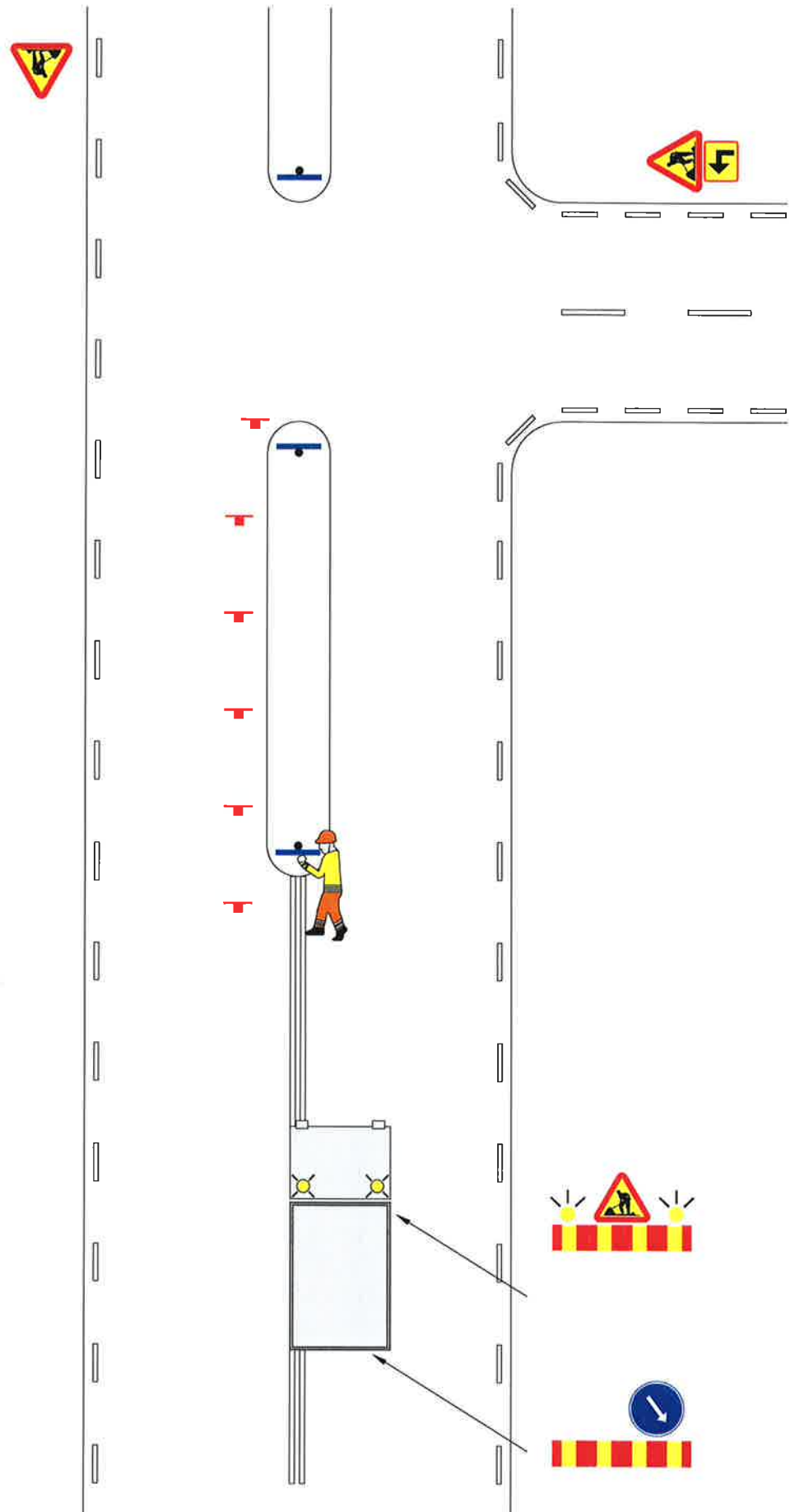
2. Arbete på gång- och /eller cykelbana



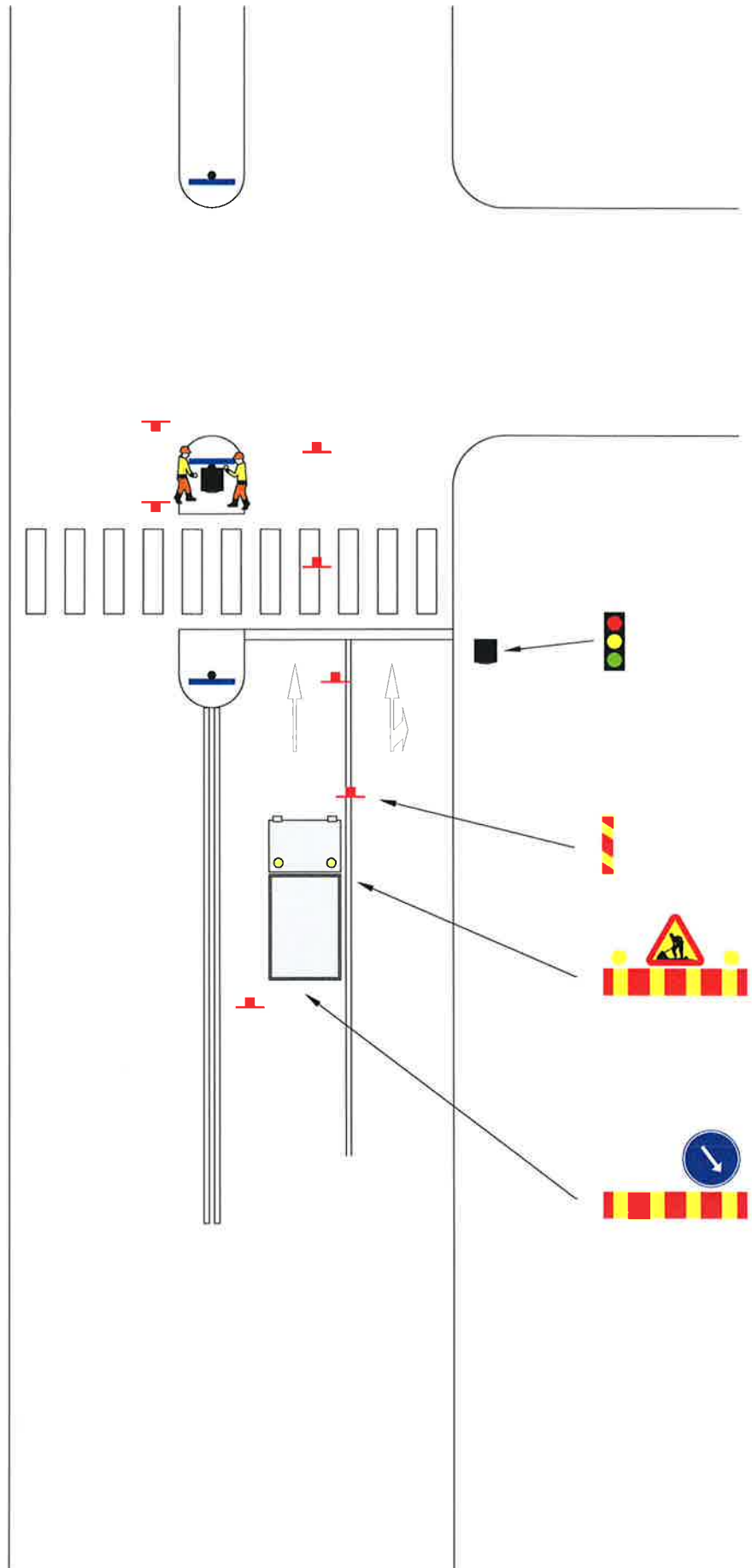
3. Arbete på gångbana- lågtrafikerad gata



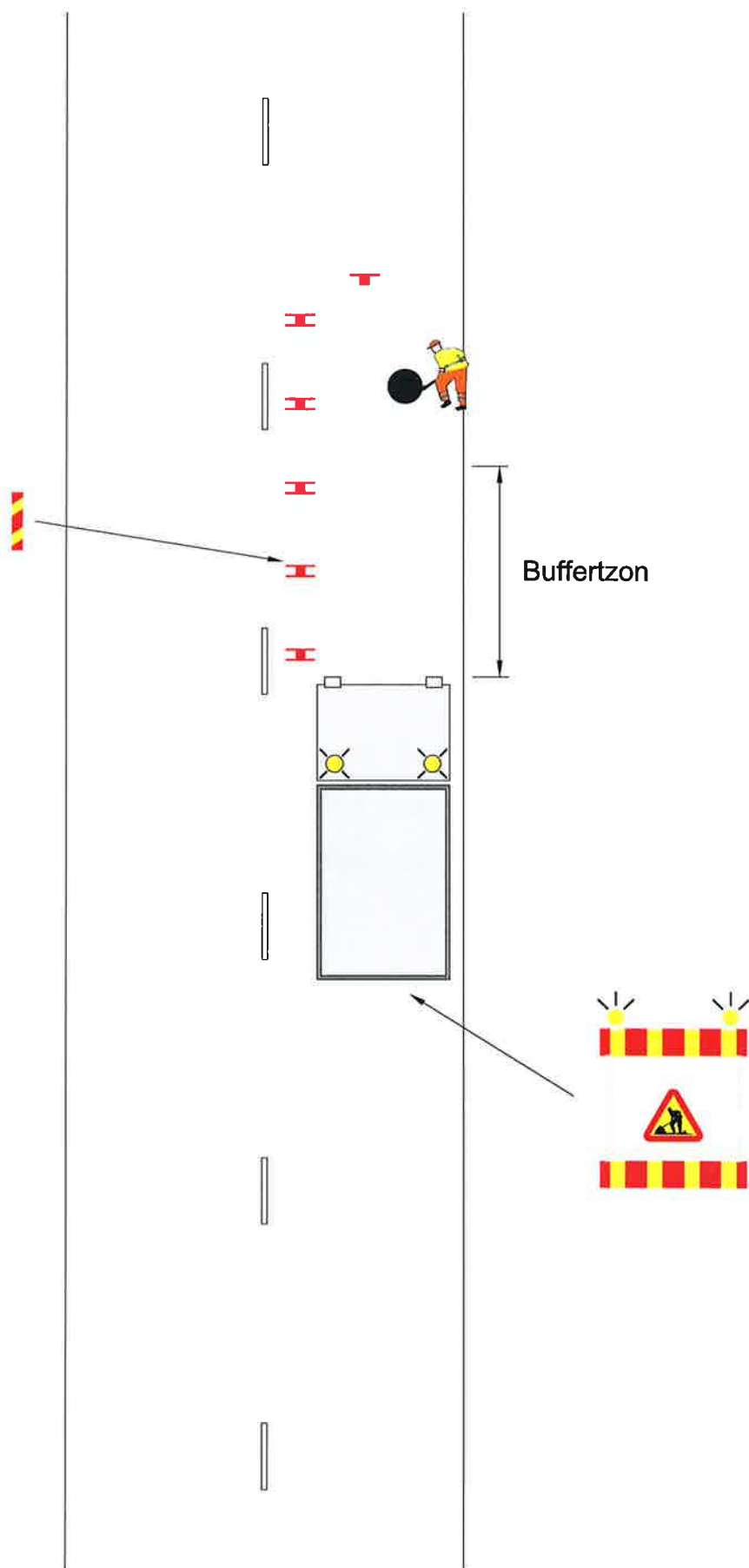
4. Arbete i refug



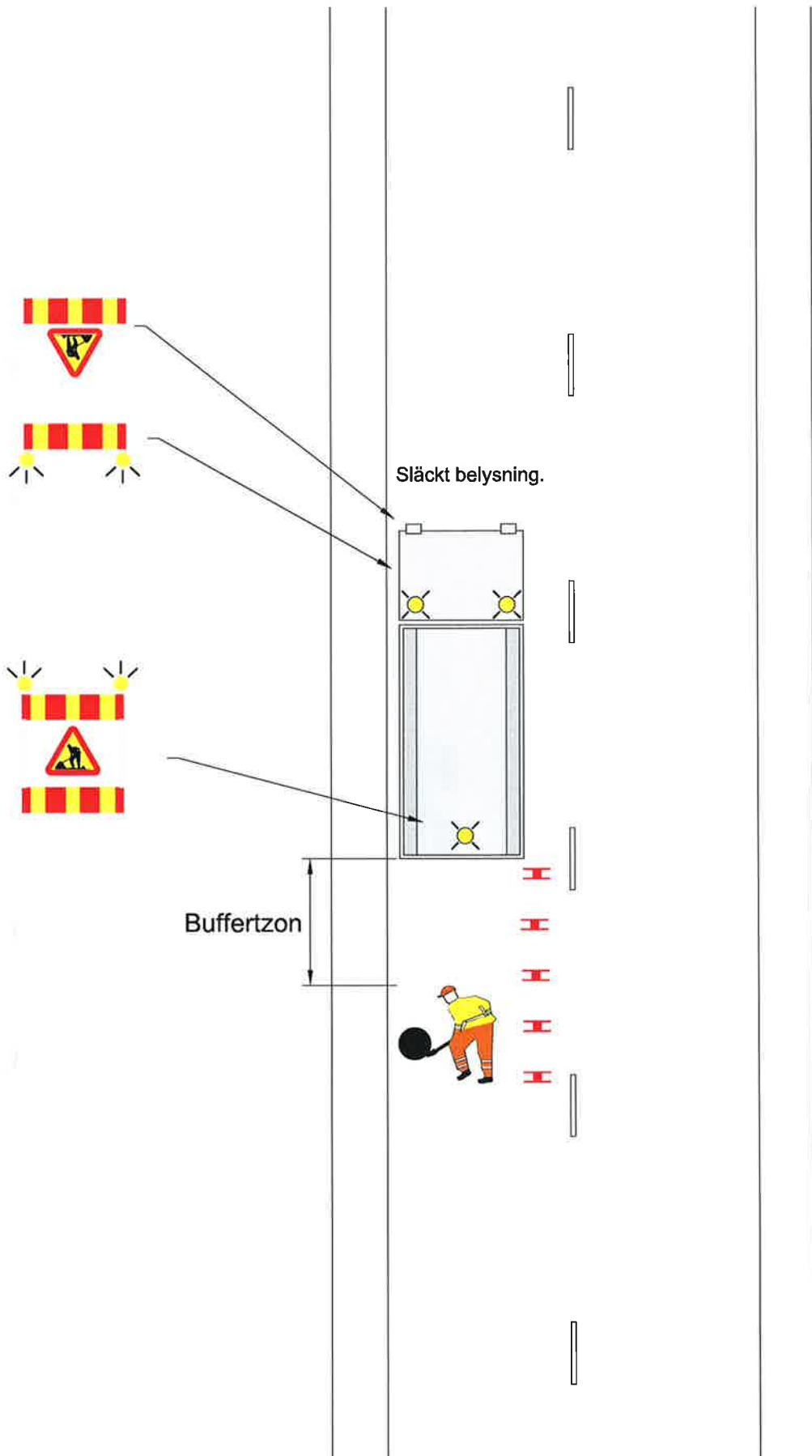
5. Arbete i refug - flerfältigsgata



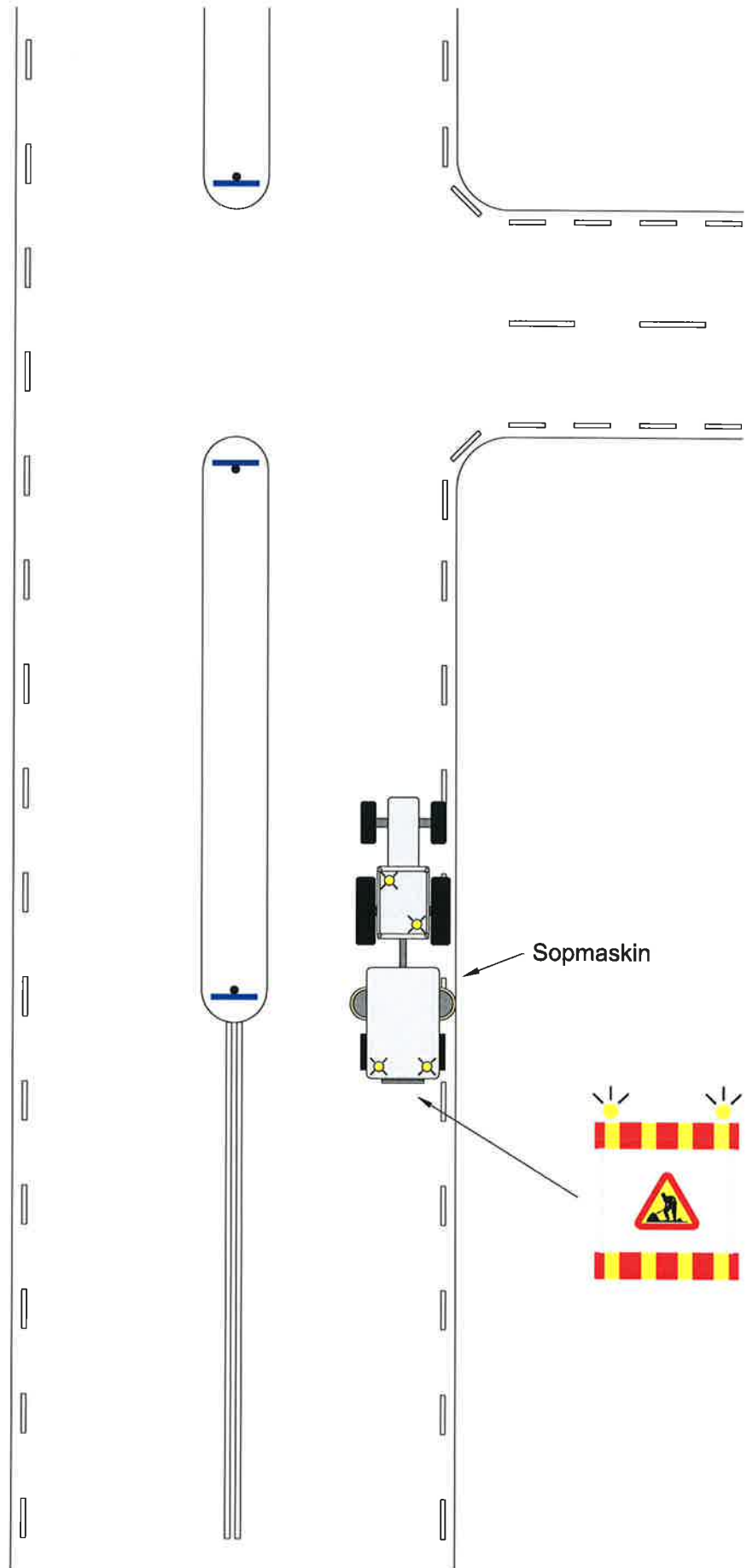
6. Arbete på gatans ena sida



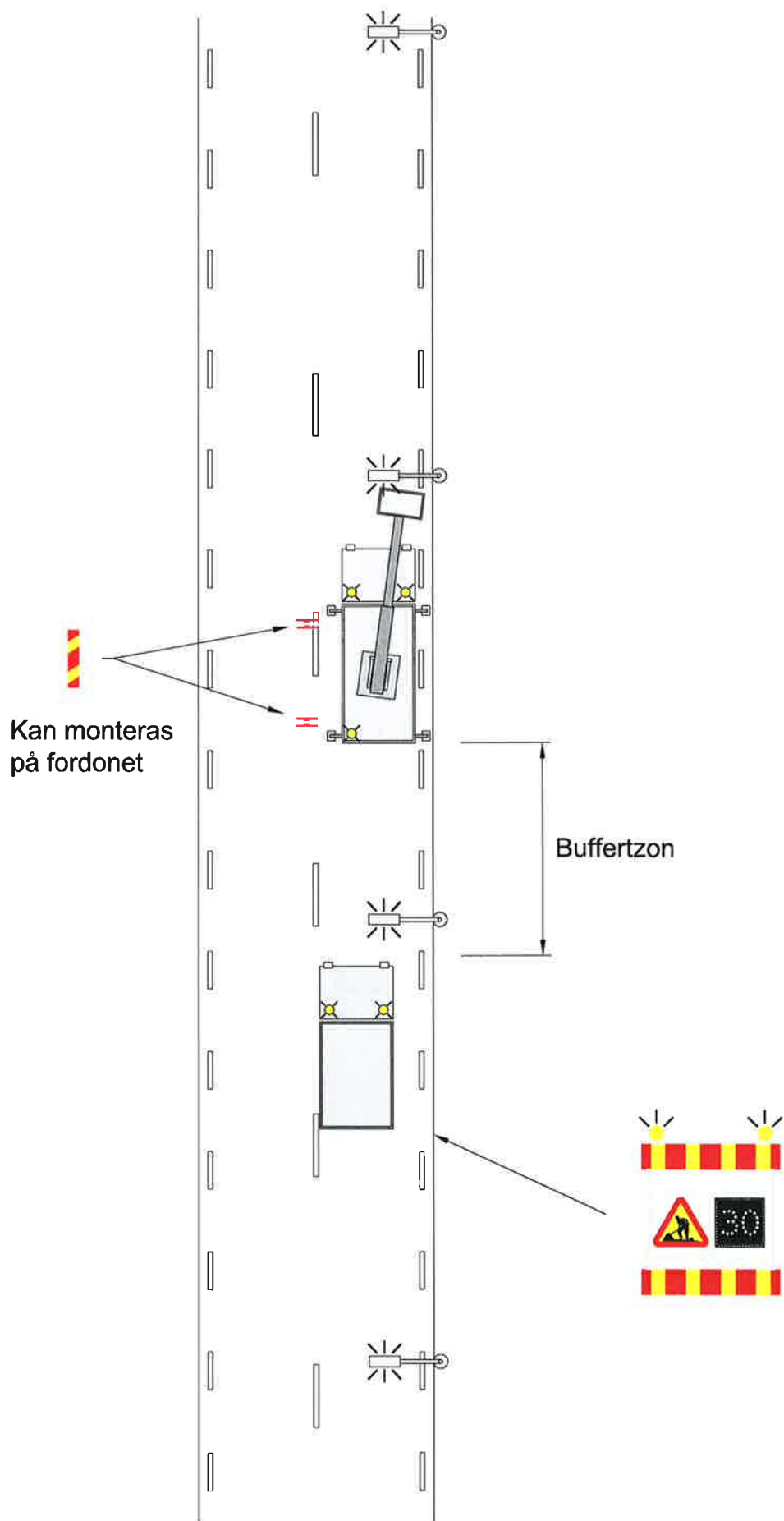
7. Arbete med spolbil



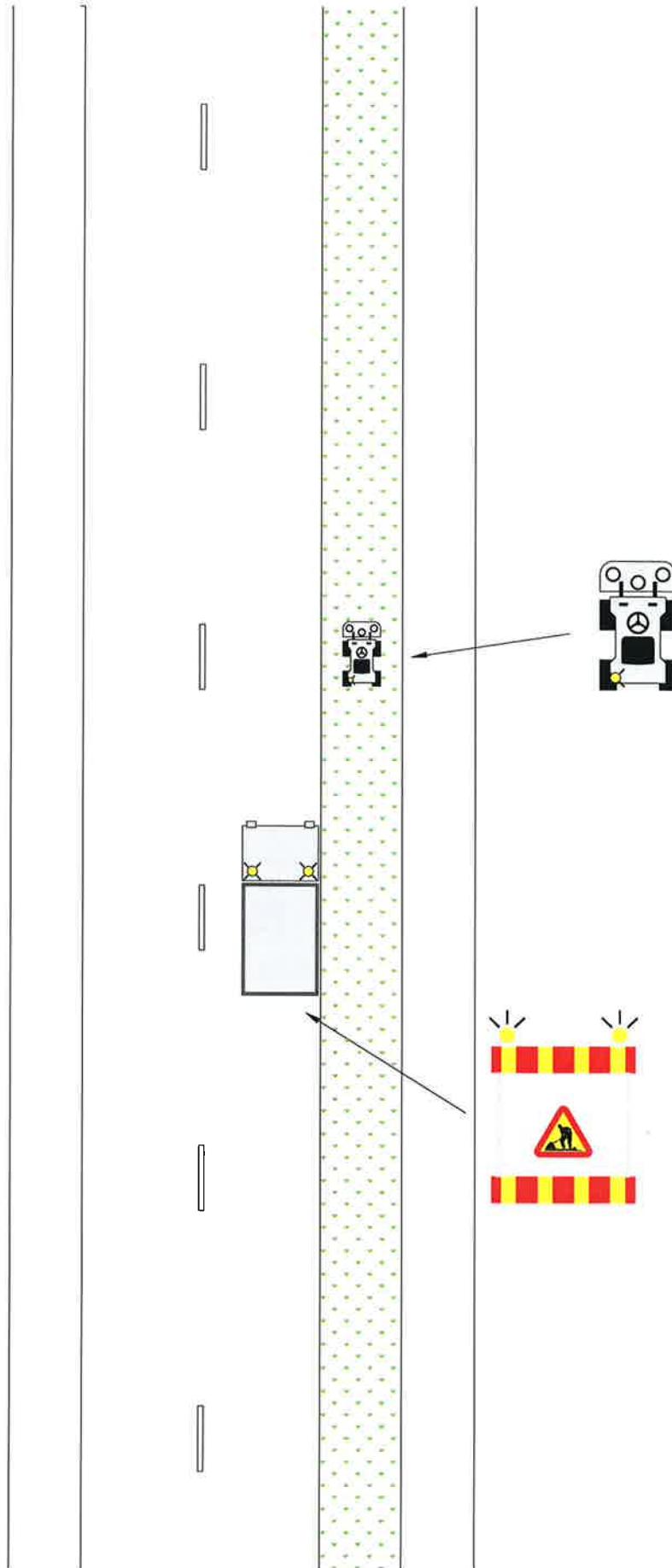
8. Arbete med sopning



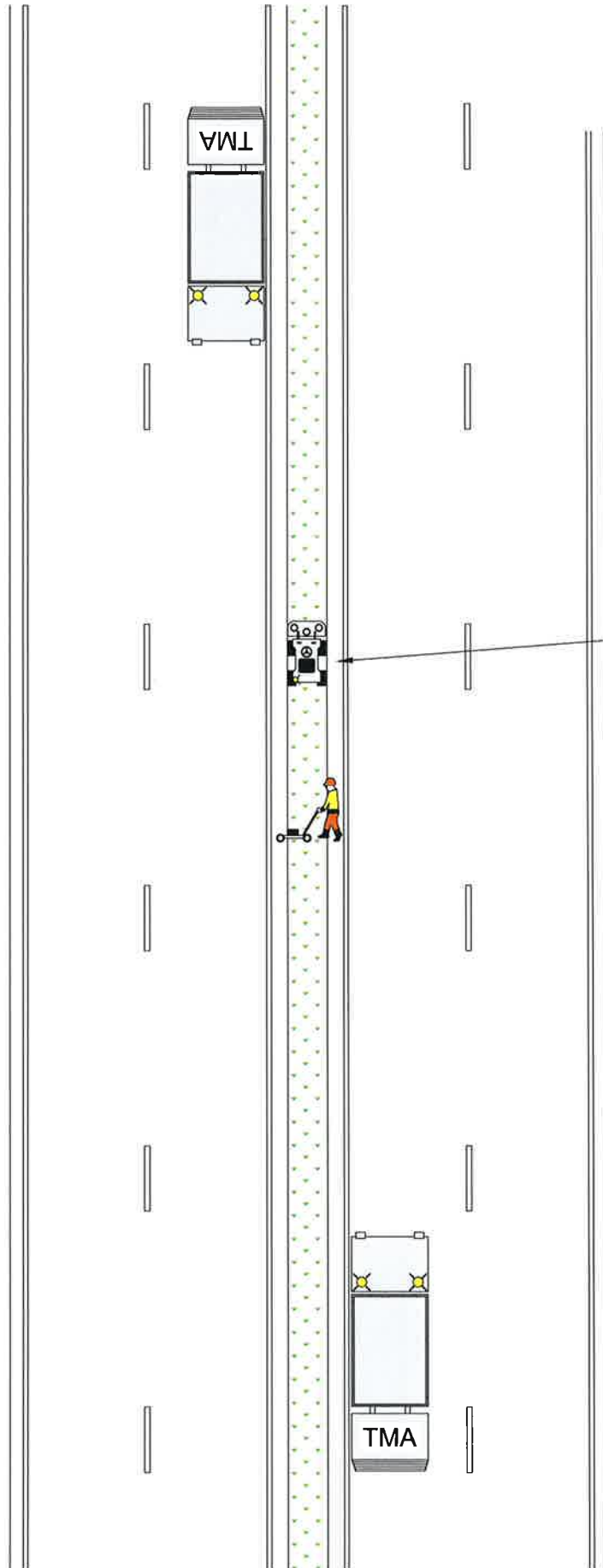
9. Arbete med lift



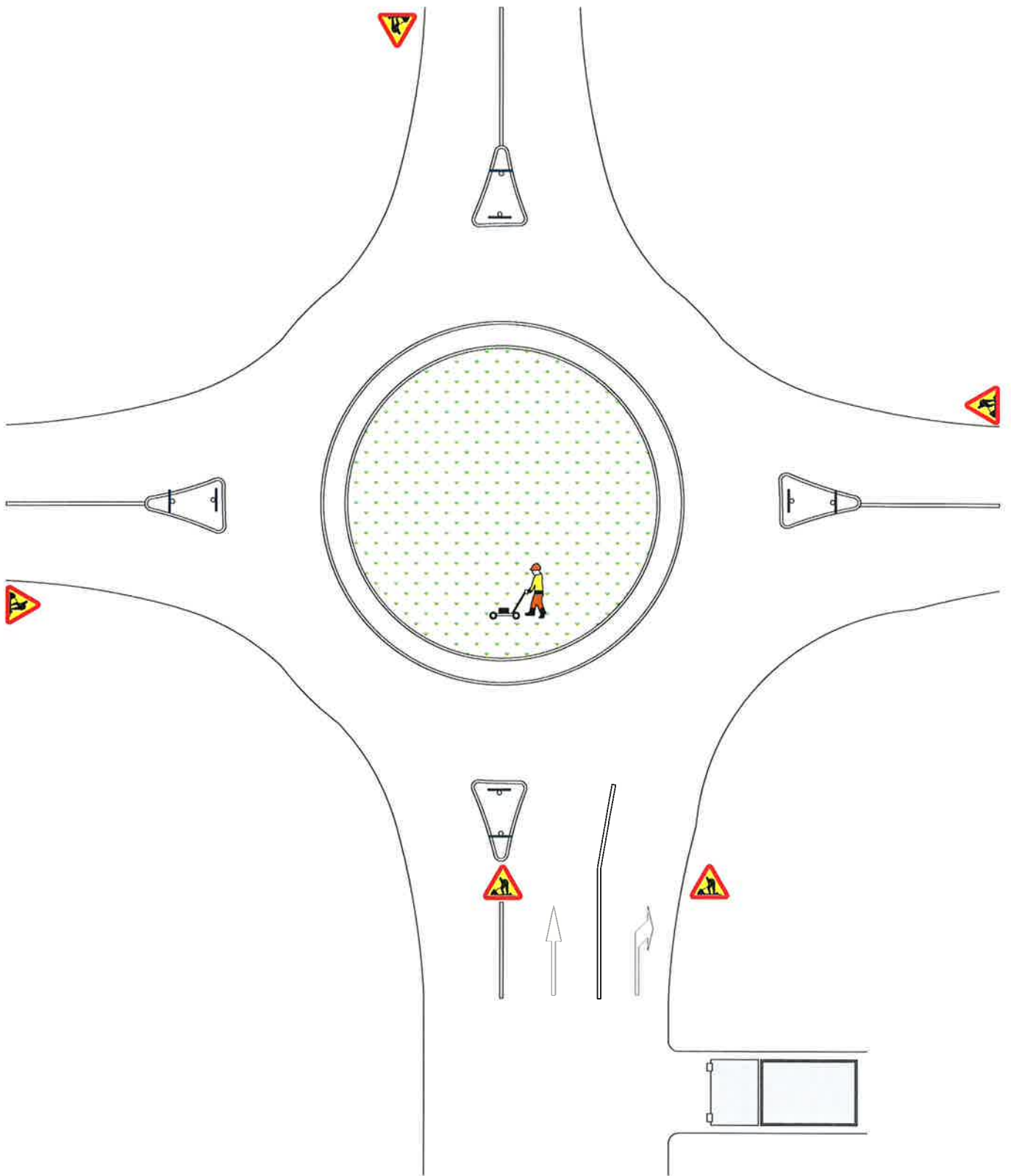
10. Arbete intilliggande gata - i skiljeremsa



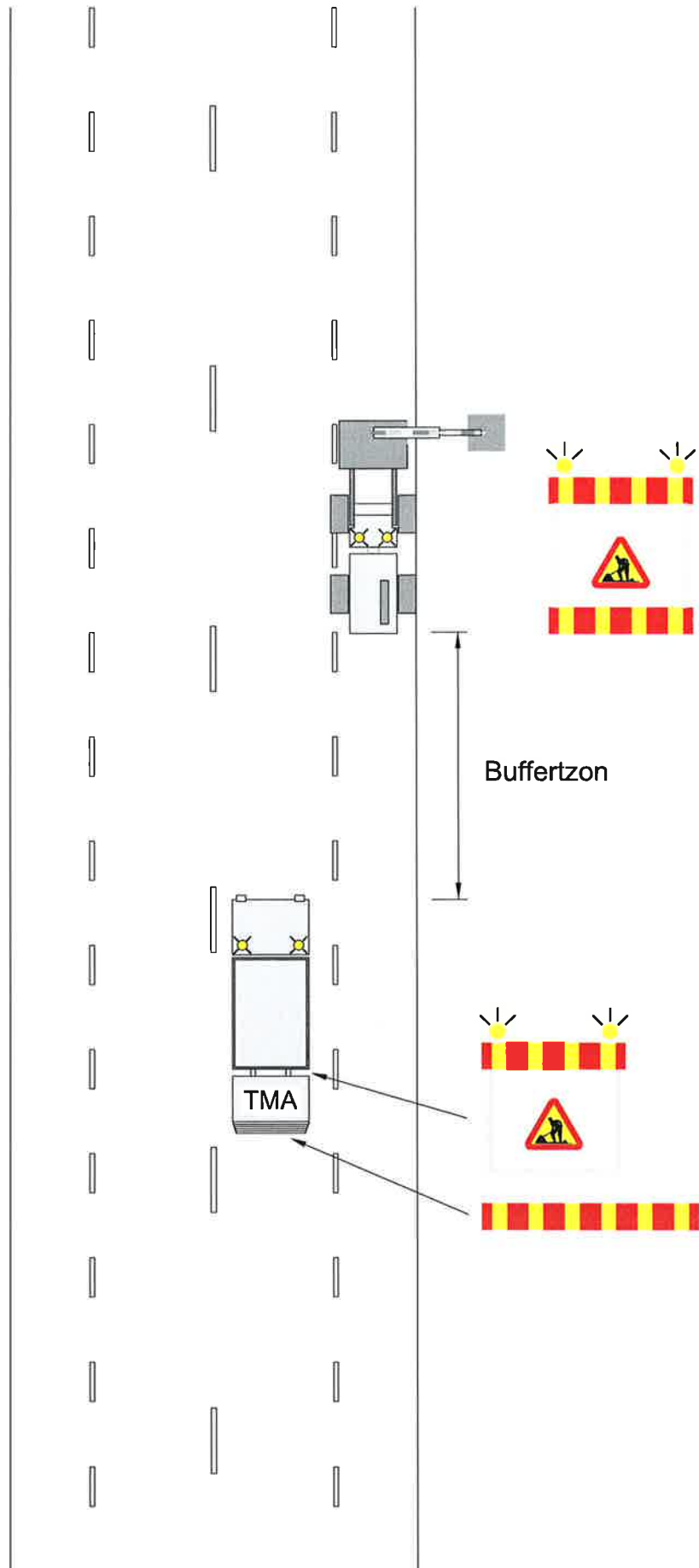
11. Arbete i mittremsa - trafikintensiv gata



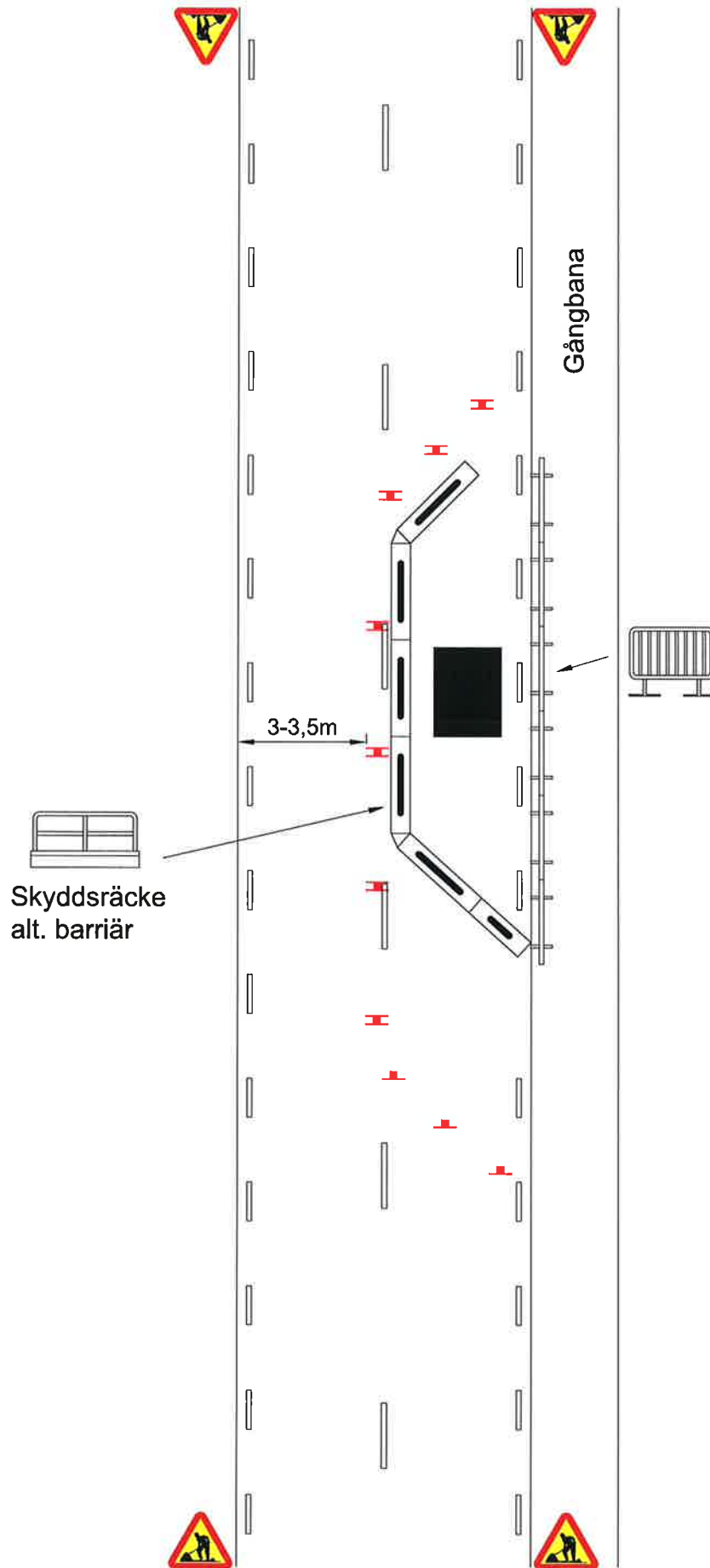
12. Arbete i rondellen i en cirkulationsplats



13. Arbete på vägrenen - trafikintensiv gata



14. Arbete i körbana



15. Större arbete på flerfältig gata

